



Southeast
Service
Cooperative

Connections

September 2021

Young Authors,
Young Artists Conference **P2**



Althing Partnership **P10**



Statewide Well-Being
Conference **P12**



Adapting Together



Save the Date for SSC's

Young Authors, Young Artists Middle-School Conference



For Students in Grades 6 - 8
Thursday, October 28



Conference Schedule

| | |
|---|----------------|
| 8:30 AM - | Check-in Opens |
| 9:00-9:05 AM | Announcements |
| 9:05-10:05 AM | Session 1 |
| 10:10-11:10 AM | Session 2 |
| 11:10-11:45 AM | Lunch |
| <i>(Bring your own, refrigeration not provided)</i> | |
| 11:50 AM -12:50 PM | Session 3 |
| 12:55-1:55 PM | Session 4 |

Registration for the Young Authors, Young Artists Middle School Conference will be accepted on a first-registered basis. There will be 145 seats for students in grades 6-8. This conference will be in-person and everyone will need to be masked.

Early Bird Registration
(Until October 18)
\$45 per student

Standard Registration
(October 18 – October 25)
\$50 per student

Students will choose 4 sessions from knowledgeable presenters. Every effort will be made to grant your requests as space allows, but we cannot guarantee that your student will get all of their requested sessions. This conference will be held at SSC's Wood Lake Meeting Center in Rochester.



**Southeast
Service
Cooperative**

If you have questions or would like to be added to the email distribution list, please contact Katie Hartman: khartman@ssc.coop, (507) 281-6667.

Bring Your Community (and CEUs) Back Together

By Sarah Ness

The Fall Educator Forum, our first biannual peer-to-peer professional development event of the year, will recognize “Bringing Back Community, Together.” Join us in-person or virtually to re-energize southeast Minnesota's STEM community after a year that ignited a paradigm shift in the delivery of STEM education in and out of school.

Submit a session proposal related to one of these event objectives:

**\$50 stipends available for selected facilitators.*

- Build and support southeast Minnesota's skilled STEM

- workforce
- Increase student diversity, equity, and inclusion in STEM participation
- Share best practices, innovations, and resources that support practitioners of learning and education
- Increase the scope and sequence of STEM programs and initiatives in PK-16
- Connect STEM stakeholders
- Reduce achievement, interest, and skill gaps

Complete Session
Proposal Application



Who Participates in Educator Forums?

PK-12 Teachers, Adult Career Pathways Practitioners, Career and College Readiness Advisors, Post-Secondary Faculty, Education Administrators, Workforce Development Professionals, Industry Representatives, Out-of-School Learning Practitioners, Non-Profits, and Employers.

Register to Attend

STEM Forward News Briefs

By Sarah Ness

STEM Signing Days: An Exciting Time for Students Who Hit the Books Instead of the Court

It's one of the most exciting times for high school students. Much like senior high school athletes declare their intent to attend a college to play a sport, southeast Minnesota seniors will have the opportunity to celebrate their intent to pursue career and college training options in high-demand STEM careers.

Partners involved in SSC's STEM Forward program are partnering up to reach over 200 students declaring their commitment during STEM Signing Days! STEM Forward aims to not only increase the number of students taking action toward being future problems solvers and thought leaders, but also hopes to inspire younger generations of friends, peers, and siblings to follow in their footsteps.

Does your high school, college, or training facility want to be involved? **Let us know!** Let's get you connected today!

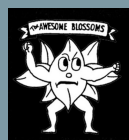


Using ESSER III Funds to Support CTE

MDE recently posted **this helpful document** related to supporting CTE in our schools using ESSER III funds. Join STEM Forward to take advantage of support for professional learning and innovation in the classroom that supports integration of STEM and CTE for your youth and staff.

Thank You to Our 2021-2022 STEM Forward Members

School Districts



Riverland Perkins
Consortium



Rochester
Public Schools



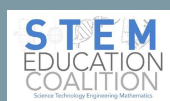
ZUMBRO
EDUCATION
DISTRICT



Higher Education



Professional Memberships



2019 MN Science Standards Grade Band Specific Learning Opportunities



SSC is offering grade band specific learning sessions during the 2021-22 school year led by SSC Faculty member Dr. Thomas Meagher. Participants will have the opportunity to design lesson plans based on the grade specific components of the new standards. Click on the appropriate grade band session to learn more and register! (Sessions take place from 1:00 - 4:00 PM)

Grades K-2 Teachers

Wednesday, November 3

Grades 3-5 Teachers

Wednesday, December 1

Grades 6-8 Teachers

Wednesday, January 5, 2022

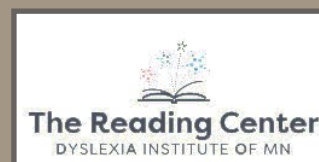
Grades 9-12 Teachers

Wednesday, February 9, 2022

Dyslexia 101 Course Available at No Cost to Minnesota Educators

It's back! Thanks in part to funding by Mayo Clinic, The Reading Center is again able to offer the five clock hour Dyslexia 101 course for FREE to Minnesota educators until April 2022. Dyslexia 101 is a great course for classroom teachers, reading specialists, paraprofessionals and administrators to learn more about the characteristics of dyslexia, reading instruction in line with the science of reading, and effective classroom accommodations.

The course is now on the easy-to-use Canvas platform. Upon completion of the course, a certificate of attendance will be issued. The Reading Center staff asks that individuals complete the course within 60 days of their registration date.



Click [here](#) to register.

1500 Bluff Country Collaborative Students to Receive New Employability Skills Training

By MaryAnne Smith

When employers are asked, “What skills do you wish new employees had before walking in your door?” the most frequent answer is employability skills: dependability, good communication, willingness to work, and ability to learn, to name a few. Bluff Country Cooperative (BCC), led by Career Navigator MaryAnne Smith, is excited to provide a new curriculum to several schools this fall that will teach students in-demand employability skills such as: how to write emails, speak on the phone, and network for college and career opportunities. The tool, Emerge, was created by Rubin, a leading provider of online instruction for business communication skills.

Seven schools of the Bluff Country Collaborative are addressing employability skills head on. All 9-12 grade students will log-in twice a month during advisory time for videos, worksheets, short readings, and quizzes. Lessons are online and self-directed. Advisory teachers



RUBIN

monitor progress and support or challenge individuals, as needed.

Completing each module is celebrated with a digital badge:

- Phone Etiquette
- Email Etiquette
- Email Etiquette Advanced
- Unforgettable Resume and “Storytelling” Cover Letter
- Advanced Networking Skills
- Advanced Social Media Networking.

All students who successfully complete six modules earn a

premium *Employability Skills for Communication* badge. The digital badges are a great way for students to highlight their knowledge to potential employers through LinkedIn and resumes. The real value is that employability skills apply to every career field. Whatever career a student pursues, good communication, dependability, willingness to work, and ability to learn will serve them well in the workforce.

Emerge integrates for single sign-on within Google Classroom, Canvas, Schoology, Blackboard, D2L, Moodle and other common LMS.

Learn more about Emerge [here](#) and view all 200+ instructional items in the program [here](#). SSC has negotiated regional pricing. **Contact** Sarah Ness to take advantage of this opportunity.

Are You Taking Advantage of All SSC's Workforce Development Supports?

Are you up-to-date on SSC's grant funding and program opportunities for STEM and CTE education for your schools?

Learn more about these and other opportunities that support tools for employability skills, college preparation, curriculum support, teacher credentialing and training, and ecosystems for collaboration and innovation.

View an interactive map by community. Contact **Sarah Ness** to get more involved.

Three Students and a Triple Win

By: Sue Lawlor-Rod

It was a productive and busy summer for three Cannon Falls High School students. Each have successfully completed an important summer internship offered by Gemini in Cannon Falls. This threefold win benefits local business, students, and our community. Not only are these connections vital to talent pipeline opportunities for employers, these students now have strong, resume-building, work experience from their hands-on learning, exposing them to liveable wage jobs in their own communities.

This opportunity was provided through the Minnesota State College

Southeast's Youth Skills Training Grant for the SLAM program (Students Learning Advanced Manufacturing). Gemini has retained one student as an employee into the school year! In return, this student is now eligible to potentially win a \$100,000 scholarship.

Southeast Service Cooperative recently presented the 2020-2021 Future Ready CTE Community and Industry Partner of the Year Award to Gemini thanks to a nomination from Cannon Falls High School Principal, Tim Hodges. "Gemini has consistently been a leader in supporting our schools through equipment donations, financial



Photo Credit: Katryn Conlin, Communications Director, Minnesota State College Southeast

support, a scholarship program, and more. We are grateful." said Tim Hodges.

Introducing Southeast Strong: A Model for Converting Interest into Careers

By: Mike Schnell

After working closely with our employer partners, Southeast Service Cooperative is proud to introduce "Southeast Strong" -



an easy to follow three-step system that:

- Provides students AWARENESS of your organization and careers
- Brings students (and potentially the adults in their life) on-site to allow them to learn more and solidify their INTEREST
- Offers students internships, mentorships, or paid work EXPERIENCES

Contact your Career Navigator, [Sarah Ness](#), or [Mike Schnell](#) to learn about how you can start strengthening your partnerships, businesses and careers to more students, and become Southeast Strong.

The Minnesota Legislature has provided funding for hundreds of \$2,500 scholarships at the 37 Minnesota state colleges and universities in the high-demand fields of:

- Advanced Manufacturing
- Agriculture
- Early Childhood Education
- Health Care Services
- Information Technology
- Transportation

Eligibility:

- Enrolled in high-demand occupation within an eligible program
- 9 credits per term; 2.0 GPA, Minnesota resident
- \$1,250 award per term (\$7,500 maximum over three years)
- Preference for students in financial need
- Adult students and third-year transfer students to state universities are eligible

\$2,500 SCHOLARSHIPS

FOR STUDENTS PURSUING DEGREES
IN HIGH-DEMAND CAREERS

\$1,250 AWARD PER TERM

Buckle Up for a Busy Fall of Events Across Southeast Minnesota

By: Nick Wobig

With schools back in-person and live events returning, now is the time to reconnect with your community. FutureForward™ is a great resource to connect students and teachers to local employers that bring excitement into the classroom, engage parents, and share industry knowledge for the generation of employees and leaders in our community. Log-in to your portal to create events, bring professionals into your classroom, and more!

Upcoming Events:

Manufacturing Month October, 2021

- Log-in to FutureForward™ to connect with manufacturing companies in your area.
- **Educators** - Network with dozens of manufacturers across southeast Minnesota interested in hosting you and your students for a tour under the “Find Companies” feature.

Work With the Employer to Learn:

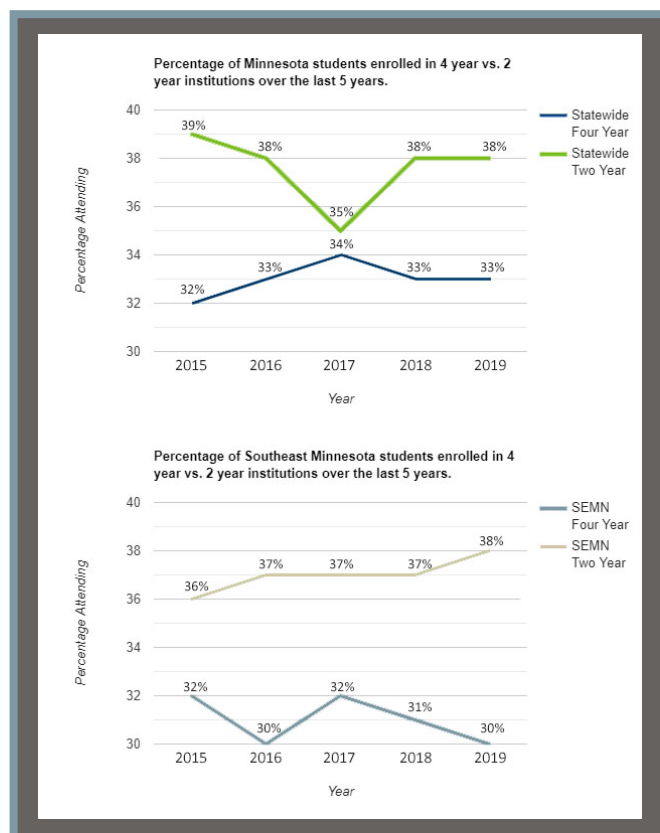
- Best dates and times for tours.
- Requested group size of students attending.
- Proper attire for youth and other guests.
- **School Administrators** - Schedule one or multiple tours with the identified employers using the “Create Experience” button.
- Do you need some inspiring lessons or activities to couple with tours? Use the “Find Topics” feature to search for the Manufacturing Week activities.

GRAUC College Festival October 12-14

Join the top ten most attended colleges and universities of southeast Minnesota students, according to SLEDs data, at this year’s regional virtual college fair. Breakout sessions, taking place during and after school, will be hosted by these top colleges and include topics like:

- How do I complete the FAFSA form?
- How do I use college advising services?
- How do I navigate scholarships?

- Advice and supports for first generation students and oldest siblings attending college and their parents.
- Popular programs and course selection choices that matter in high school.
- New or innovative pathways to employment.



Welcome to Our New Colleagues!



Karlyn Brewington

Administrative Assistant

I was raised in Kasson and graduated from Kasson-Mantorville Schools in 2000. I also graduated from Rochester Community and Technical

College with an associate of arts degree the same year, after attending RCTC through KM's Postsecondary Options Program. Technically, I received my college degree three weeks prior to my high school diploma. I went to Arizona State the following year as a Theater major.

I moved back to Minnesota the following year and continued waitressing and selling fragrance and cosmetics in a retail setting until I met my husband, who encouraged me to complete the Mayo-sponsored medical secretary program. I was a medical secretary for five years when I lost my husband to cancer. I bought a

home in Kasson and accepted a position at Kasson-Mantorville Schools as the superintendent's secretary. The positions I've worked since leaving education have been less than fulfilling, so when I saw a position open up at SSC, I was thrilled. While I was at KM, every encounter I had with SSC staff was pleasant, professional, and accommodating. I had a good feeling about coming here, and so far, every day has exceeded my expectations. I feel empowered, supported, valued, appreciated, and included. I'm so grateful!

Outside of work, I enjoy...more work! I still dabble in waitressing a few nights a week. I love that additional opportunity to meet new people and build new relationships. In my actual free time, I enjoy spending time with my boyfriend, Rodney, our three dogs, my three sisters and brothers-in-law, my four nieces and seven nephews, my folks, my aunts and uncles, my cousins, my friends, and my co-workers, old and new! Live music, stand-up comedy, theater shows, spectating sports, home improvements, bonfires, boating, and binge-watching Netflix are some of my favorite things to do. I'm SO HAPPY to be here at SSC!



Kevin Cardille

Career Navigator

*Serving the communities of
Dover, Elgin, Eyota, Lake City,
Millville, Kellogg, Plainview, St.
Charles, and Wabasha*

I grew up in Nashwauk, Minnesota, which is northern Minnesota on the Iron Range. I currently live just north of Rochester in Oronoco. I received my bachelor's degree from the University of Minnesota - Duluth in Science Education. I completed two Masters degrees, one in Curriculum and one in education administration. I later completed my superintendent certification. All of these were through St. Mary's University.

I served 33 years in education as a teacher, coach, advisor, and administrator. My first 10 years I taught science in various fields grades 7-12. I also coached

football, basketball, and track. I was also a science fair coordinator, science club advisor, and technology specialist during my years as a teacher. I was a K-12, 9-12 and 5-12 Principal for 17 years and spent the last 6 years as a district superintendent.

I am married to Deb and have two children, John and Anna. I enjoy watching movies, but I enjoy the outdoors the most. I like hiking, exploring, fishing, and hunting. I love creating habitats for wild animals where I watch and observe them.

I am excited to work with school staff and students to help students find interest and motivation for learning. I am a firm believer that students drive to learn is controlled by their having a purpose for learning. I hope to assist them in finding that purpose.

I am excited to work with school staff and students to help students find interest and motivation for learning. I am a firm believer that students drive to learn is controlled by their having a purpose for learning. I hope to assist them in finding that purpose.

Social Emotional Learning and Mental Health Supports Event at SSC

By Kari Kubicek

SSC hosted a *Social Emotional Learning and Mental Health Supports Event* on September 14, to showcase tools and resources we have available to help our districts support their students and staff in these areas.

SSC Faculty member Angie Ellsworth kicked off the event with a presentation outlining her philosophy of coaching and delivery and how she teaches students and staff strategies to build their personal capacity in handling stress, trauma, mental health issues, and more. Angie has facilitated one-time trainings as well as provided long-term support in the areas of SEL, mental health, behavior management, cultural competency, and more, to most SSC member districts as well as a few non-member districts and local government agencies.

Click [here](#) to learn more about what Angie can provide your staff and students or **contact** Kari Kubicek at SSC. Also, to view an upcoming Behavior Management series opportunity facilitated by Angie, click [here](#).

Next up on the program was Betsy Bahn sharing information about EmpowerU, a tech-enabled solution that provides highly personalized, data-driven SEL Tier 1 and Tier 2 solutions to equip students to be resilient, self-directed learners and reach their goals – without a heavy lift from schools or need for additional hires.

MREA districts are eligible to receive a discounted price on EmpowerU and SSC members who are also MREA members will receive an additional discounted rate. Learn more by visiting the [EmpowerU website](#) or **contact** Betsy Bahn directly.

Participants were introduced to the Althing health service solution during the final presentation of the event. Althing's Mat Johnson, Katja Kressman, and Matt Rush, along with Austin Public School's former superintendent David Krenz and current school psychologist Brienna Sterzinger shared information about the tool and what Austin Public Schools have experienced in using it in their schools. SSC has



partnered with Althing to distribute the tool to districts to be used to address the rising mental health and addiction challenges our students and staff face today. Additional information about Althing and SSC's partnership is outlined in the article on the following page.

Participants in the event were very engaged and valuable discussions took place related to supporting our students and staff in these critical areas. One participant commented, "I learned A LOT yesterday. The Althing was completely new to me; it's exciting and thought provoking all at the same time. I'm aware of Angie and her services and she always does a wonderful job. Empower U was also new information and interesting!"

If you are interested in learning more about these opportunities, please **contact** Kari Kubicek at SSC.

SSC Announces Partnership with Althing LLC for Innovative K-12 and Adult Health and Education Services



SSC, through a 5-year agreement with Althing LLC, will distribute breakthrough student mental health, addiction and general health services that include immediate care provider access. Althing LLC is an innovation leader in population health, rural and K-12 services. SSC will further provide Althing Health services to their insured and adult member population.

SSC members will have access to Althing's solutions for:

Althing Student Health Services

Empowers districts to provide broad, qualified health screeners to their entire student population in a more efficient and effective manner. The screeners effectively identify and mitigate depression, addiction, safety, food security and other potential health issues while providing immediate interventions and referrals to qualified health providers through the Phrazer/Kitsune® platform. Through this novel, proven service, SSC will help its members identify, address, and resolve student health issues before they worsen.

Althing School Staff Health Services

Provides mental health, addiction, and general health services for school staff while informing them of current and relevant district health needs. This service, through SSC, helps identify health needs of staff, provides qualified provider access, and guides staff and administration in ensuring a healthier district.

Althing Convenience Care and Wellness

Provides local, proactive health services with immediate access to qualified providers. These services will reduce

insurance costs, improve community health, and engage community members locally, in their own language and culture.

Additional Althing Services

Affordable educational support, career path, employment programs, and community health will be supported via SSC.

Steve Sallee, SSC's Executive Director, shared, "Concerns of depression and health access are acutely impacting our communities. Additional pressures from COVID and reduced local access to qualified care has resulted in some very difficult consequences for our members. Althing services, tested and proven within our membership, enables timely benefits for our communities." In addition to providing Althing services for members, SSC and Althing will collaborate on grants, sponsorships, and special events to further improve the affordability and access for all communities in the region.

"In our partnership, SSC will bring Althing Services proactively to our communities. As SSC and its members benefit from the unique services of Althing, Althing itself will evolve with SSC's insights. We are proud to have this partnership, to serve all SSC members, equally, efficiently and respectfully in modernized health and education services." shared Mat MK Johnson, Althing President.

About Althing LLC.

Althing is a Minnesota based community services provider with special focus on community health access, education, and economic development through modernized service platforms. Althing employs the Phrazer/Kitsune® platform to provide community engagement in any language, literacy, gender, and culture. Althing provides proactive mobile health, community clinics, education, and workforce services that are inclusive, community centric, and locally managed. In a recent groundbreaking achievement, Althing solutions provided the first ever complete, affordable, and effective health services, with real-time provider access, to students between 12 and 18 years of age in a key Minnesota school district. This milestone achievement sets the standard for identifying and mitigating the rising health concerns of today's students.

Strategic Doing: Leading Complex Collaborations

By Kari Kubicek

SSC has partnered with the Agile Strategy Lab at the University of Northern Alabama to bring the *Strategic Doing: Leading Complex Collaborations* training to Southeast Minnesota. This 2 1/2 day learning experience, scheduled for Monday, November 8 through Wednesday, November 10, at SSC, will teach the deep skills, tools, and frameworks of agile strategy and collaboration. The Strategic Doing discipline teaches participants how to design and guide complex collaborations by following simple rules. Taught by “Fellows” who are both skilled teachers and have practiced the discipline for several years, the session is practical, interactive (including an extended simulation), and action-oriented. Strategic Doing developed its strategies over more than two

decades of working with those whose aim is to strengthen their organizations, communities, and regions.

In a Strategic Doing workshop, groups will take on a question about their community or organization’s future, and using the Strategic Doing **4 Questions**, will explore, identify opportunities, and begin to take action on the most promising of those opportunities.

People from many career sectors have benefited from using Strategic Doing in their professional and personal settings, including: economic developers, educators, corporate leaders, engineers, nonprofit professionals, government officials (local, state and federal), students, scientists, consultants, health care professionals, clergy, workforce system leaders, and IT



Strategic DoingTM
Do More Together.

experts (that’s just a partial list). **Anyone** who is working in a setting in which there is a degree of collaboration needed, and/or the environment in which they’re operating is dynamic, will find the skills useful.

Visit the **Strategic Doing** website to learn more about the Strategic Doing discipline. Click [here](#) for a description of the training. To register for this opportunity, click [here](#), or **contact** Kari Kubicek at SSC.

In partnership with



Micro-Endorsements for Teachers Focused on Student Well-Being, Learning Recovery, and Equity in the Classroom

MSC EDvancement has partnered with BloomBoard to offer three micro-endorsements designed to help your teachers build foundational skills needed to ensure student success this school year.

Through these programs, Minnesota teachers can build skills to address:

- [Student Well-Being](#)
- [Student Learning Recovery](#)
- [Equity in the Classroom](#)

These new competency-based programs provide an innovative way for schools to support educators in deepening their practice through collaboration and coaching.

Check out www.mscedvancement.org for more details or **contact** Jen McLachlan.





MHC WELLNESS CONFERENCE 2021

SAVE THE DATE for this incredible conference to: Retrain the way you THINK. Rethink the way you MOVE. When we know better, we do better!

 **19TH OCTOBER 2021**

 **8:45 AM - 12:15 PM**

 **[Register Here!](#)**

Free Event | **PD Certificate Available**

| | |
|--|--|
| <p>Kristie Walker Movement Specialist</p>  <p>9:00 - 10:00 AM Just Breathing</p> | <p>Ann Dolence Motivational Speaker</p>  <p>10:05 - 10:55 AM Work - Life Balance</p> |
| <p>April Graff Hy-Vee Dietitian</p>  <p>11:00 - 11:45 AM Love Your Lunch</p> | <p>What's working for YOU?</p>  <p>11:45 - 12:15 PM Ideas from Members</p> |

Over 500 Pounds of Food Shared With the Community From the Rochester ALC's Gardens!

SSC is so pleased to provide the land for the ALC's bountiful gardens! The Green Thumb Initiative recently shared that they've distributed over 500 pounds of food to the community via the Rochester Public Library's Bookmobile. This quarter The ALC's garden class is called *Math in the Garden*. Students are learning about how to apply the math concepts they learn in the classroom to the hands-on experiences in the garden. They will be harvesting, preserving, freezing, canning and cooking the garden vegetables. If you're interested in volunteering for the garden project, contact Katie Sloan at kasloan@rochesterschools.org.



OSHA's Emergency Temporary Standard for COVID-19 Applies to School Nurses

By Dan Fitch, IEA

OSHA recently adopted a Temporary Emergency Standard for the healthcare field. Compliance was required on some items by July 6 and others by July 21, 2021.



includes a hazard assessment (*This is not your "restart" or "back to school" plan - The items included are not the same*)

- Train applicable employees on the plan and the new Standard
- Conduct a Hazard Assessment and provide necessary PPE to employees
- Conduct medical evaluations and fit tested for those employees that need respiratory protection

To read the standard in full, click [here](#).

What is it?

The standard provides regulations that are intended to protect healthcare employees from COVID-19.

Who does it apply to?

In summary, the standard applies to employees in the healthcare field. That includes:

- School nurses
- Health service assistants
- Employees providing healthcare other than nurses such as paraprofessionals and secretaries
- The spaces in which those services are performed

How do we comply?

The good news is compliance is fairly easy! Your district needs to:

- Have a written plan complying with the standard that

Do you need help?

IEA is happy to help! We have reviewed the standard and reference documents to create a customizable written plan and created a training for staff members. We will be utilizing 3M's online medical evaluation tool to set up necessary employees for online medical evaluations and have trained staff members and equipment to conduct on site fit tests.



For more information on how to comply with the OSHA Emergency Temporary Standard, call Angie Radel at the Institute for Environmental Assessment at (507)-281-6682, or email angie.radel@ieasafety.com.

IEA Rochester Welcomes Ian!

The IEA Rochester Office is excited to welcome Ian Dickhausen to our team. Ian's been with IEA since 2016 working at our Brooklyn Park Office. He graduated from the University of MN-Duluth with a Bachelor of Science degree in Geology. Ian is an MDH-certified Asbestos Inspector, Site Supervisor and Project Designer, as well as a Certified Playground Inspector and MDH-certified Radon Measurement Professional. Ian will be managing the AHERA inspections services and hazardous material abatement projects out of our Rochester Office.



SSC Upcoming Events

October

Regional Instructional Coaching Cohort
October 12

MHC Well-Being Conference
October 19

MASA Region 1 Fall Session
October 20

November

**Science Teaching is “Phenomenal”:
Designing Effective Science
Lessons with the 2019 MN state
Science Standards for K-2 Teachers**
November 3

Strategic Doing: Leading Complex Collaborations
November 8

STEM Forward Educator Forum
November 10

We've Got This: Behavior Management Series Session 1 - Classroom Management 101: Fresh Start or Re-Start
November 12

Board Meeting
November 17

SAC Meeting
November 23

December

**Science Teaching is “Phenomenal”:
Designing Effective Science
Lessons with the 2019 MN State
Science Standards for 3-5 Teachers**
December 1

We've Got This: Behavior Management Series Session 2 - Self Regulation: Recognize, Regulate, and Return to Learn
December 3

SAC Meeting
December 14

Board Meeting
December 15

Cooperative Purchasing Connection Wins National Award for Relationship Excellence



Cooperative Purchasing Connection (CPC) has received a national award for relationship building through the Association of Educational Purchasing Agencies (AEPA).

CPC is the trusted cooperative contract procurement partner for education communities, municipalities, and nonprofits. CPC maintains a portfolio of competitively solicited contracts that Minnesota, North Dakota, and South Dakota schools and organizations have come to rely on for service, relationship, and great value. AEPA is a national cooperative of education purchasing professionals from 29 states, managing national contracts with vendors in dozens of buying categories.



Lisa Truax, Mary Juliot, Julia Dangerfield, Melissa Mattson, Lori Mittelstadt, Jerome Evans, and Jane Eastes

Each year AEPA members vote to recognize outstanding contributions by AEPA member states and vendor partners. The CPC team received the award for Relationship Excellence at the AEPA Spring 2021 Annual Meeting.

The Relationship Excellence award recognizes excellence in stakeholder engagement strategies that proactively support opportunities for co-discovery, intimacy, trust-building, collaboration, brainstorming, solution development, and other activities that support the mission of AEPA.

For more information, please email The CPC Team at info@purchasingconnection.org, call us at 888-739-3289, or find us online at www.purchasingconnection.org. As your public nonprofit cooperative purchasing partner, we're always happy to help.

SSC Board Actions and Information

In addition to routine fiscal and business actions, the Board took the following actions in recent meetings. Complete SSC Board of Directors meeting minutes are available on the SSC website at www.ssc.coop.

April

- Approved the Personnel Committee's staff compensation recommendation, effective July 1, 2021.
- Approved the Personnel Committee's staff insurance recommendation, effective July 1, 2021.
- Re-opened the vacant Administrative Assistant position.
- Hired Karlyn Brewington for the position of Administrative Assistant, effective May 3, 2021.

May

- Approved posting the new Marketing and Media Position.
- Approved posting the new Perkins Coordinator Position.
- Approved keeping membership fees the same for 2021-2022.

June

- Approved the CCOGA 2020 Settlement.
- Approved the 2021-2022 SSC Employee Benefits Plan.

- Approved the 2021-2022 Budget.
- Approved the Board Stipend Increases.
- Approved the NRHEG Public Schools Membership Resolution.

August

- Approved the EmpowerU Partnership.
- Approved a Reserve Release.
- Approved the Resignation of Heather Schutte, effective Sept 8.
- Approved the hiring of Katie Hendrickson for the position of Media and Marketing Coordinator.
- Approved the hiring of Jami Schwickerath for the position of Perkins Consortia Coordinator.
- Approved the hiring of Kevin Cardille for the position of Career Navigator.
- Approved the CNA Contract.
- Approved the final Althing Contract.

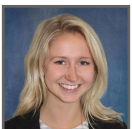
SSC Service Consultants



Bill Colopoulos
Health and Benefits
Consultant
bcolopoulos@ssc.coop



Karen Klein
Regional Manager,
Coop Member Services, ICS
Karen.Klein@ics-builds.com



Annie Dittberner
Account Executive, Holmes
Murphy Consultant
adittberner@ssc.coop



Angie Radel
Regional Manager, IEA
angie.radel@ieasafety.com

Connections is a publication of the Southeast Service Cooperative, published three times per year for members, associates, and the general public.
Editor: Nicole LaChapelle-Strumski, nlachapelle@ssc.coop

Southeast Service Cooperative
210 Wood Lake Drive SE
Rochester, MN 55904
Phone (507) 288-1282
Fax (507) 288-7663

Office Hours:
Monday - Friday
8:00 AM - 4:30 PM
www.ssc.coop

Shaping the Future
for communities of leaders and learners

About Southeast Service Cooperative

Southeast Service Cooperative Staff



Steve Sallee
Executive Director
ssallee@ssc.coop



Alicia Bredesen
Meeting Center
Coordinator
abredesen@ssc.coop



Karlyn Brewington
Administrative Assistant
kbrewington@ssc.coop



Kevin Cardille
Career Navigator
kcardille@ssc.coop



Amy Grover
Associate Director
agrover@ssc.coop



Chris Hancock
Accounting
Coordinator
chancock@ssc.coop



Katie Hartman
Program Manager
khartman@ssc.coop



Katie Hendrickson
Media and Marketing
Coordinator
khendrickson@ssc.coop



Kari Kubicek
Manager of
Educational Services
kkubicek@ssc.coop



Nicole LaChapelle-Strumski
Program Manager
nlachapelle@ssc.coop



Sue Lawlor-Rod
Career Navigator
slawlorrod@ssc.coop



Sarah Ness
Program Manager
ssness@ssc.coop



Mike Schnell
Community
Engagement
Coordinator
mschnell@ssc.coop



Jami Schwickerath
Perkins Coordinator
and Career Navigator
jschwickerath@ssc.coop



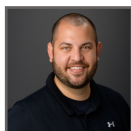
MaryAnne Smith
Career Navigator
msmith@ssc.coop



Kim Swanson
Accounting Assistant
kswanson@ssc.coop



Dale Walston
Director of Operations
dwalston@ssc.coop



Nick Wobig
Career Navigator
nwobig@ssc.coop

Regional Center of Excellence Staff



Jeff Aamot
SE/Metro Director
jaamot@mnce.org



Isabella Anderson Eggen
Advocate
ieggen@mnce.org



Raymond Blackledge
Advocate
rblackledge@mnce.org



Jennifer Bordonaro
Advocate
jbordonaro@mnce.org



Erik Durand
Advocate
edurand@mnce.org



Joe Jezierski
Climate Advocate
jezierski@mnce.org



Ashley Karlsson
Education System
Specialist
akarlsson@mnce.org



Melanie Lawrence-Smith
Advocate
mlawrencsmith@mnce.org



Keitha-Gail Martin-Kerr
Advocate
kmartinkerr@mnce.org



Shana Moses
Advocate
smoses@mnce.org



Cindy Mullins
Advocate
cmullins@mnce.org



Jane Stevenson
Advocate
jstevenson@mnce.org



Carol Swanson
Advocate
cswanson@mnce.org



Perry Wilkinson
Education Equity and
System Specialist
pwilkinson@mnce.org



Sarah Zeigler
Advocate
szeigler@mnce.org

SSC Board of Directors

Mary Blair-Hoeft, Chair
City of Byron

Brein Maki, Vice-Chair
Lewiston-Altura Public Schools

Lynn Gorski, Treasurer
City of Farmington

Jean Roth, Clerk
Zumbrota-Mazeppa Public Schools

Theressa Arrick-Kruger
Houston County

Mike Christensen
Red Wing Public Schools

Don Leathers
Austin Public Schools

Jason Marquardt
Mabel-Canton Public Schools

Monica Sveen-Ziebell
Plainview-Elgin-Millville Public Schools